

How to repressurise your combi boiler with an integral charging Filling link

These instructions are for the following boilers:

- 24i and 28i
- 30si
- 37CDi
- 42CDi
- 1) Ensure the power to the boiler is turned off and the heating system has cooled down.
- 2) If necessary, remove the cover-plate from the underside of the boiler, as shown in the image below:



- 3) Locate the white T-shaped filling key (it will normally be clipped to the bottom panel of the boiler).



- 4) Look up into the bottom of the boiler and you will see a black plastic manifold, as highlighted in the image below. It is connected to the DHW (domestic hot water) inlet connection and the CH (central heating) return collection.



-
- 5) Insert the key into the hole in the manifold (there is a 'padlock' symbol on the plastic body- line up the arrow on the shaft of the key with the 'open padlock' symbol).



-
-
-
- 6) Turn the key to line up the arrow on the key with the 'closed padlock' symbol, to ensure that the key is fitted correctly try to pull it straight down when in the locked position and it should stay in place.
- 7) Now turn the white knob on the side of the key gradually anti-clockwise. You will hear the water start to flow (the more you turn the knob, the faster the water will flow).
- **Please ensure the key is fully inserted, water may drip out if it is not fully inserted!**



-
- 8) Observe the pressure gauge; when it reads approximately 1 to 1.5 bar, turn the white knob back to the fully in position to stop the flow of water into the system.



-
- 9) Turn the key back to its 'unlock' position and remove it by pulling the key downwards- a small amount of water will be spilt. If water continues to drip from the hole the key was fitted into, turn the grey/white knob another half turn clockwise. Store the key in the clip on the inside of the bottom panel or another safe place.



This process may need repeating should you now bleed the radiators

LOW PRESSURE How to top up

Your pressure gauge on your combi should read anywhere between 1bar and 1.5bar when the system is cold, when the system is hot it can rise to 2bar and over, If you vent or drain the radiators you will have to top the pressure up and below is how to do this

You will have either a Filling Loop or a Filling Link both systems and methods for topping up are below:-

How to repressurise your combi boiler with a Filing Loop

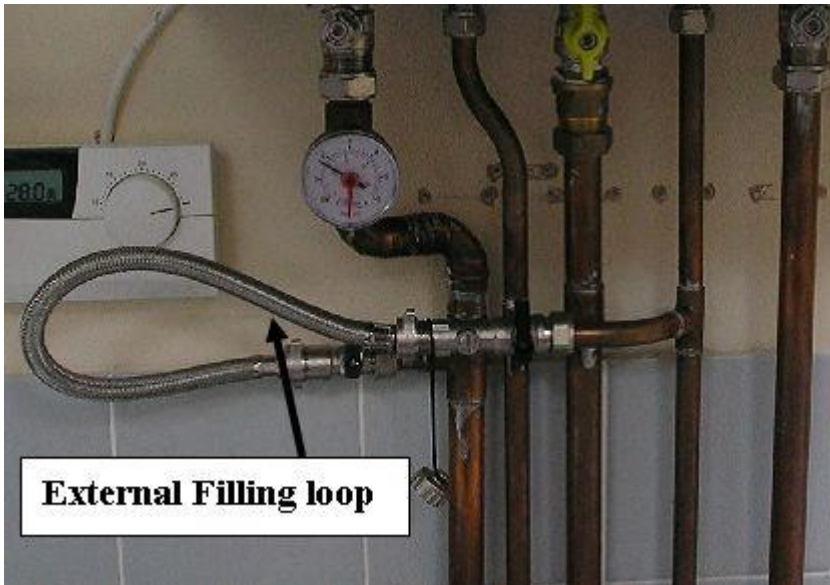
The external filling loop is a silver coloured braided hose which is connected between the central heating return pipework and a cold water mains pipe.

It should be located close to the boiler and is often found under the sink if the boiler is in the kitchen.

The braided hose will have a valve fitted on either one or both ends.

Here are a couple of examples of how external filling loops look:

External filling loop on gas boilers



How to use the external filling loop

1. Make sure both ends are securely attached to the pipes
2. Open one or both of the valves on the braided hose, this allows water to flow into the heating system
3. Watch the pressure gauge rise slowly until it reaches about 1.5 bar (in the middle of the green section)
4. Return valves to original position, this stops the flow of water into the boiler